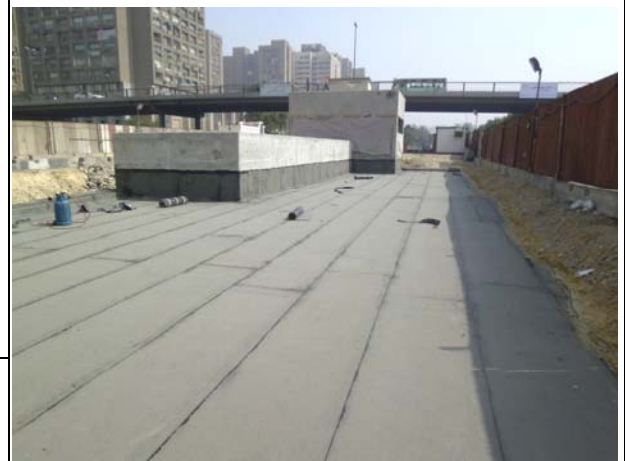




Cairo Metro Line 3 (Roof Level) - Egypt

Project Name: Cairo Metro Line 3 – Phases 1&2
Scope: Watertightness Works
City: Cairo
Country: Egypt
Main Contractor: Egyptian French Joint Venture For Civil Works
Applicator: Sodeco Specialties S.A.E
Construction Period: 2008 -2014
Owner: National Authority For Tunnels Egypt

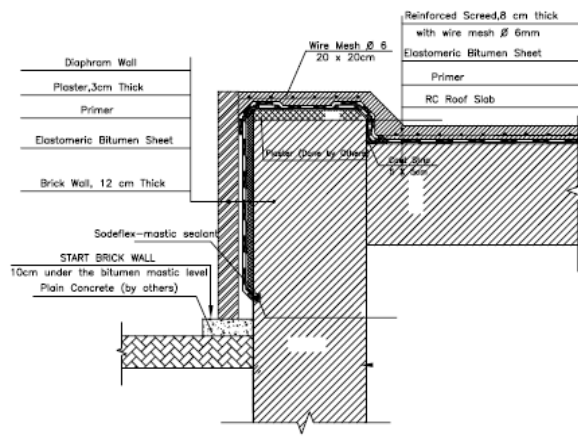


Construction site - Cairo Metro Line 3

The main purpose of watertightness is to keep the roof & the retaining wall dry & away from any moisture.

Surface preparation :

- Substrate must be clean, dry, smooth and free of roughness or dips.
- The cast – concrete surface for roofs must be left to dry before the sheet is applied.
- **Sand cement** cants shall be installed in the angles formed between the roof and walls or curbs.
- Apply a bitumen **primer** .



Technical Information

Products Used: *SOPRIME WB – Water based Bitumen Primer*

SOBIT G - Granular Modified Bitumen Waterproofing membrane

Areas Treated: 50,000m²

❖ SOPRIME-WB

- Is a premium quality non-toxic water based bitumen primer designed for various applications as a primer coat.

❖ SOBIT G

- Is a high performance roofing membrane, surfaced with reflective natural color slates to give maximum protection against UV radiation the presence of the slates provides a mechanical protection against light foot traffic and occasional maintenance as well as offering an aesthetic surface. It is an ideal membrane for roofing application where it can be placed on top of the existing surface, providing an economical and efficient solution to leaking roofs. Also, this slated membrane is resistant to water borne chemical attack.



Construction site - Cairo Metro Line 3



Membranes Applications:

- Waterproofing Membrane shall be applied with a suitable gas torch burner connected to a propane gas cylinder.
- Sheets are overlapped longitudinally of 100mm and end laps of 150mm.
- Bonding is carried out by torch application in such a way that a continuous bead of melted bitumen comes out from the overlap.
- For horizontal surfaces : The layer should be covered immediately after application with a protective reinforced screed with 8 cm thick and reinforced with wire mesh 5 Ø 6 mm/m².
- For vertical surface : The layer should be covered immediately after application with a brick wall 12 cm thick.

